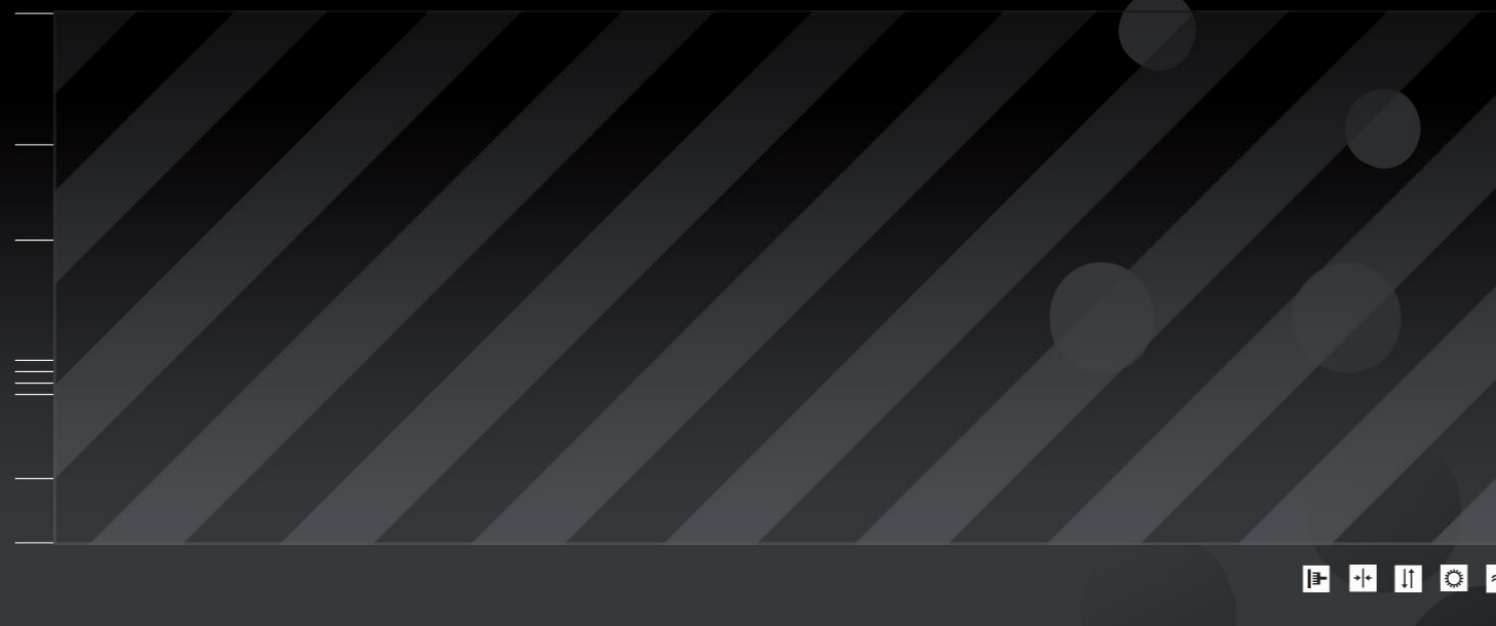
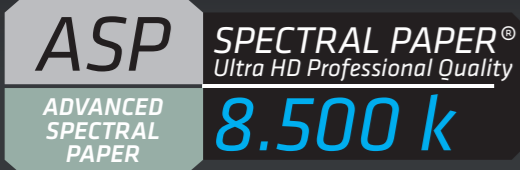


Bildtitel / Title: Dynamische Zeile 1
 Nummer / Number: Dynamische Zeile 2
 Breite x Höhe / Width x Height: Dynamische Zeile 3

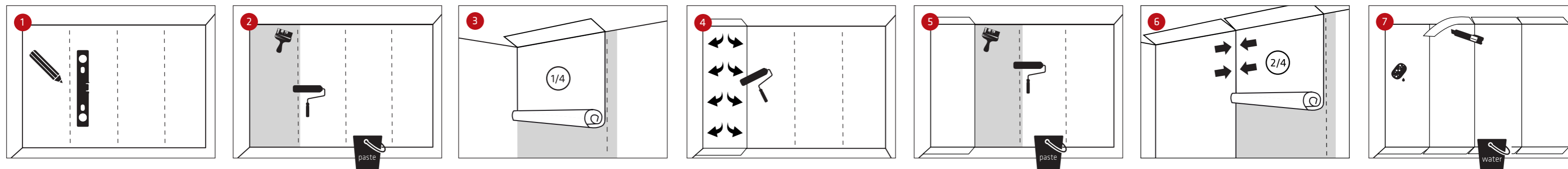


Bahn / Strip:
BAHN_X_von Y

WALLPAPER ON DEMAND®

Professional industrial production of high-definition quality wallpaper for architects, designer, artists and end customer
 Digital wallpaper printing on **ASP | Spectral Paper Ultra HD Professional Quality | 8.500 k**

Bitte prüfen Sie die Ware VOR Verarbeitung an der Wand auf eventuelle Mängel.



Die Wand sollte eben und frei von Unreinheiten, wie Fett, Öl, oder Tapetenresten sein. Zeichnen Sie senkrechte Hilfslinien an.

Tapetenleim mit kaltem Wasser anrühren und ca. 30 min ziehen lassen. Den Leim gleichmäßig etwas über die erste Hilfslinie hinaus auf der Wand verteilen.

Mit dem Kleben der ersten Bahn von oben nach unten beginnen. An den Kanten an Decke und Boden etwas Abschchnittmaterial überstehen lassen.

Die Bahn von oben nach unten glatt streichen, sodass die Luft an den Seiten entweichen kann.

Den Leim gleichmäßig über den nächsten Teil verstreichen und Schritt 3 und 4 wiederholen.

Zweite Bahn Stoß an Stoß zur ersten Bahn anbringen und dabei darauf achten, dass das Motiv passt.

Überschüssigen Leim mit Schwamm und klarem Wasser entfernen. Überstehende Tapete an Decke und Boden mit Cutter abschneiden.

The wall should be plane, clean and free of impurities, such as grease, oil, or wallpaper remainings. Draw vertical helper lines.

Mix the wallpaper glue with cold water and let it steep about 30 min. Spread the glue evenly over the first helper line on the wall.

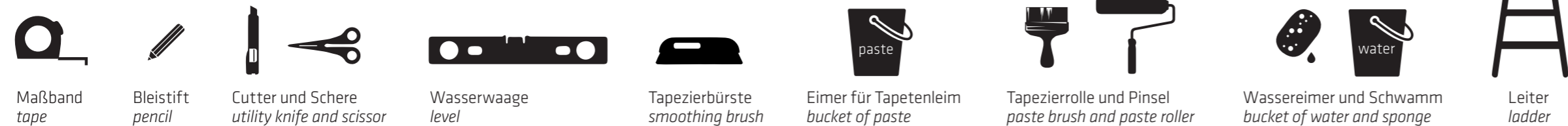
Start sticking the first strip from top to bottom. Leave some balance material at ceiling and floor edge.

Smooth wallpaper from top down and from centre outwards. Make sure, that all airbubbles are removed.

Spread the glue over the next part of the wall and repeat step 3 and 4.

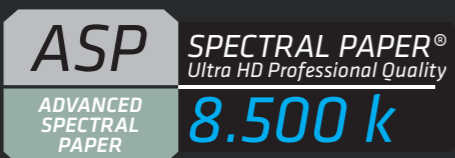
Place the second strip impact on the first strip, taking care that the motif fits.

Wash away excess paste using a sponge and water. Trim excess wallpaper using a sharp utility knife along ceiling and floor.



Den Raum gut lüften, damit die Tapete trocknen kann.

Ventilate the room well to make the wallpaper dry.



ASP | Spectral Paper Ultra HD Professional Quality | 8.500 k

Product Description

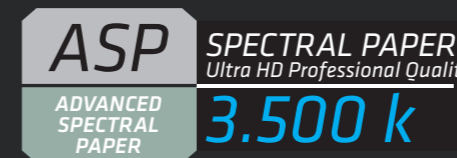
- › Coated nonwoven
- › Matt surface
- › Printing Technology
- › Inkjet latex systems
- › Inkjet solvent systems

Key Applications

- › Wall Decoration: personalised wallpapers; photo wallpapers

Benefits and Properties

- › Individually developed for digital printing technologies
- › Soft-touch feeling
- › PVC free coating
- › Excellent dry strippability
- › Excellent smudge and water-resistance
- › Low gloss level, minimized differential gloss



ASP | Spectral Paper Ultra HD Professional Quality | 3.500 k

Product Description

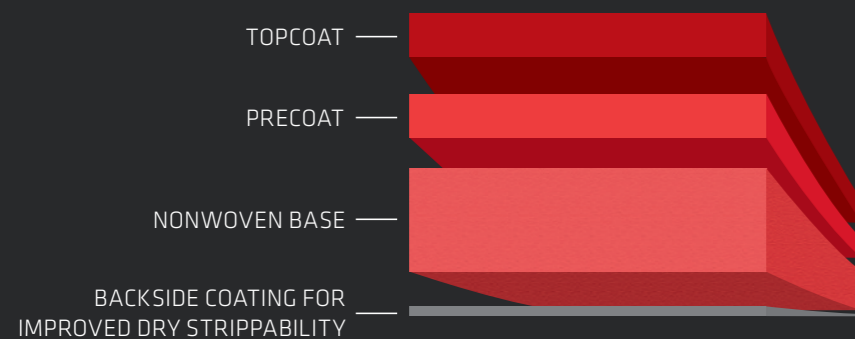
- › Uncoated nonwoven
- › Matt surface
- › Printing Technology
- › Dry toner systems
- › Inkjet latex systems

Key Applications

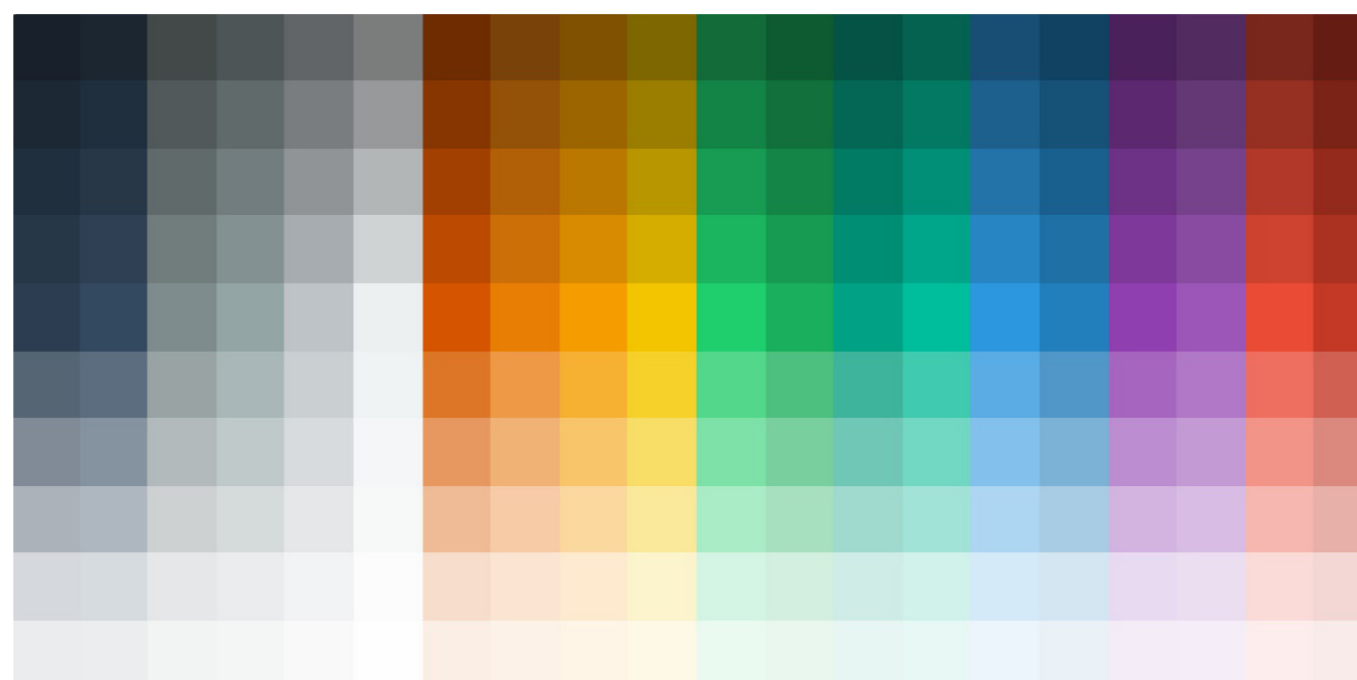
- › Wall Decoration: personalised wallpapers; photo wallpapers

Benefits and Properties

- › Individually developed for digital printing technologies
- › Soft-touch feeling
- › Homogeneous formation
- › Perfect handling and edge-to-edge alignment
- › Excellent dry strippability
- › Perfect smudge and water-resistance



1200 dpi resolution
 high-definition images



Need help?
 Call +49 30 44 04 20 53
 Email support@berlintapete.de
 www.berlintapete.de